



H&E SMITH

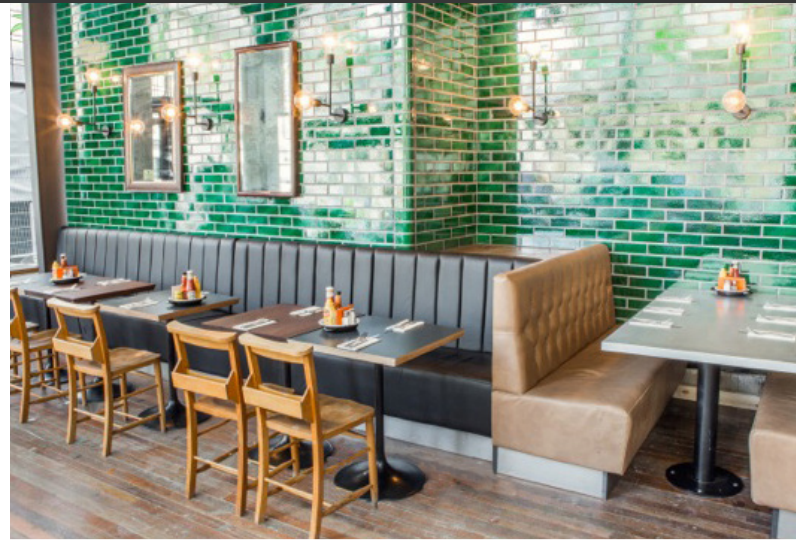
# ECO GLAZED BRICKSLIP

CERAMIC

19+  
COLOURS

1  
FINISH

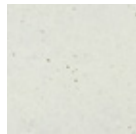
3  
SIZES



Our Eco Glazed Brickslip range is produced from recycled Welsh slate dust which is fired to form a 215x65x15mm brickslip, this is then glazed and re fired to produce a durable and highly decorative product for external and internal applications.

19 Standard colours are available, however any colour from the RAL selector can be applied if required.

## COLOURS



Snow



White Mist



Winter Morning



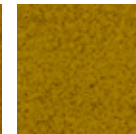
Cool Lavender



Magnolia



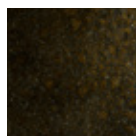
Ochre



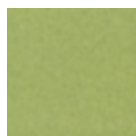
Mustard



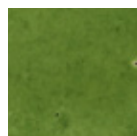
Signal Yellow



Weathered Bronze



Sea Grass



Cut Grass



Jade



Denim



Royal Blue



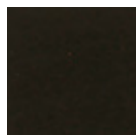
Crimson Red



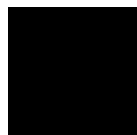
Rich Burgundy



Midnight



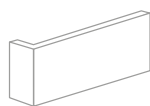
Treacle



Black

Samples should be requested as print colours may vary from original

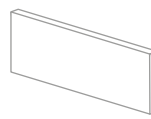
## FITTINGS



Pistol Corner



Curved Corner



Field Tile



Half Tile



Strip



H&E SMITH

# ECO GLAZED BRICKSLIP

CERAMIC

19+  
COLOURS

1  
FINISH

3  
SIZES



SIZE (MM)	TYPE	FINISHES	THICKNESS (MM)
215 x 65	Field Tile	Glazed Gloss	15
107 x 65	Half Tile	Glazed Gloss	15
215 x 31	Strip	Glazed Gloss	15
215 x 65	Pistol Corner	Glazed Gloss	15
114 x 65	Curved Corner	Glazed Gloss	15

Please contact our sales office for exact details.

For samples, specification data or technical advice please call 01782 281617 or email [sales@hesmith.co.uk](mailto:sales@hesmith.co.uk)  
All measurements are in mm unless stated otherwise

[WWW.HESMITH.CO.UK](http://WWW.HESMITH.CO.UK)

